

01. BASIC



GAFFORELLI SRL

01. BASIC

Bottoni camiceria / Shirt Buttons

Bottoni Capospalla / Clothing Buttons

Moschettoni, Piercing, Clip e Centroseno

Bottoni Automatici & Occhielli / Snap Buttons & Eyelets

Articoli Personalizzati / Logo Items

Ganci & Fibbie / Buckles & Hooks

Coprinodo & Tirazip / Cord Ends & Zip Puller

Ricoperti & Minuterie / Covered & Metal Parts

Pietre da Ricamo / Stones & Sequins Stones

Hotfix & Passamanerie / Hotfix & Embroidery

Catene / Chains

www.gafforelli.com

SHIRT BUTTONS
BOTTONI CAMICERIA



3771
MM 8-10-12-14

152	53	76	71	78	110	81	
43	82	84	86	54	102	44	87
79	80	52	92	69	93	64	40
88	59	95	151	58	98	99	



5005
MM 7-9

64	54	152	53	71	78	81	43
82	84	86	102	44	51	87	70
49	52	92	69	93	46	45	38
79	80	101	40	88	153	42	91
59	95	167	158	157	58	98	99



D 500 lin. 20



D 499 lin. 20



A 809 lin. 16



D 501 lin. 16



A 810 lin. 18



5629 lin. 14



D 511 lin. 20



0164 lin. 20



D 502 lin. 18

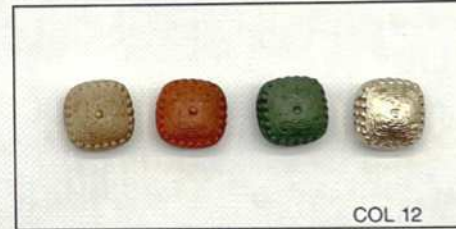


D 509 lin. 16



COL 74 106 49 91

D 510 lin. 18



COL 12

D 506 lin. 22



D 508 lin. 20

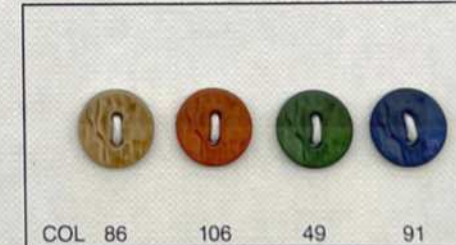


D 505 lin. 20



COL 86 91 10 19

D 507 lin. 20



COL 86 106 49 91

D 503 lin. 20



G 132



G 134



G 133 mis. 1-2



G 135



G 136



G 137 50



G 138 48



G 139 44



G 140 44



988 20



993 18



989 18



800 16



G 141 18



G 142 18



G 143 18



G 147 18



958 18



G 144 18



G 146 18



G 145 18



col. 19/74

19/53

19/79

G 148 lin. 18



col. 19/84

19/52

19/40

G 149 lin. 20



col. 19/74

19/53

19/79

G 150 lin. 20



col. 19/54

19/52

19/40

G 151 lin. 24



1125 lin. 20



1126 lin. 20



col.

79

106

82

88

75

98

1124 lin. 20



col.

101

79

82

88

87

98

A 639 lin. 16



col.

3/74

19/79

19/43

19/88

19/87

3/99

A 640 lin. 18



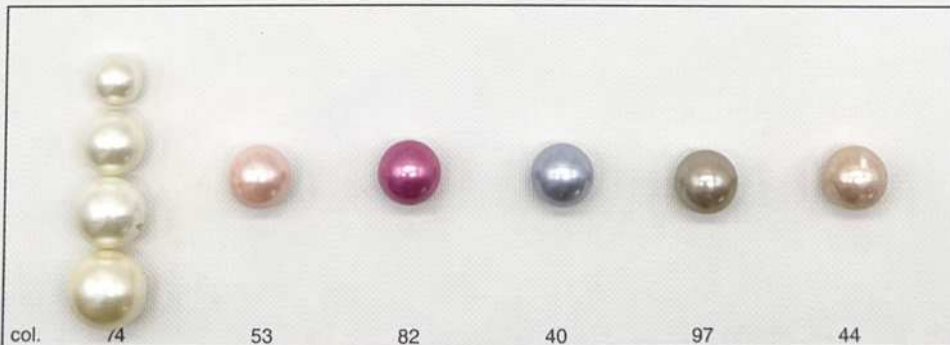
D 416 lin. 18



A 638 lin. 16



A 637 lin. 14



col.

74

53

82

40

97

44

D 417 lin. 14 - 18 - 20 - 22



5206 mis. 2



5285 lin. 14



5397 lin. 16



3986 mm. 10



9206 lin. 16



A519 lin. 18



A521 lin. 18



A520 lin. 16



A 517 lin. 18-22



A 518 lin. 18-22



803 lin. 18-28



882 lin. 16-24



881 lin. 14-18



883 lin. 14-24



A522 lin. 22



9102
lin. 10 - 12 - 16

10/74



10/102 10/82 10/69 10/40 10/95 10/98
10/99 10/86OP 10/53OP 10/43OP 10/167 10/51



9102
lin. 10 - 12 - 16

74/74



52/52 106/106 81/81 79/79 87/44 99/58



9103
lin. 12 - 16

10/74



10/102 10/82 10/69 10/40 10/95 10/98
10/99 10/86OP 10/53OP 10/43OP 10/167 10/51



9103
lin. 12 - 16

74/74



52/52 106/106 81/81 79/79 87/44 99/58



9087



9088



9106



9107



9105



9104



9248 PT 9248 BT
lin. 14 - 18



9249 PT 9249 BT
lin. 14 - 18



9250 PT 9250 BT
lin. 14 - 16



9251 PT 9251 BT
lin. 14 - 18



7338 lin. 16 - 20



7339 lin. 12 - 16



7340 lin. 12 - 16

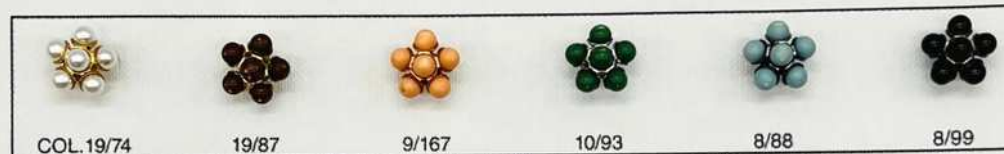




3143 PE lin. 16



3985 lin. 18



3985 PE lin. 18



9135 lin 18



9135 PE lin 18



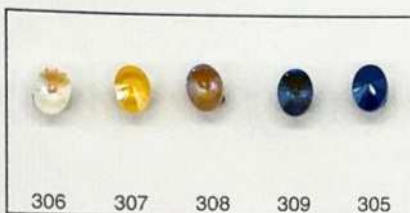
3657 lin. 24



D 206 lin. 20



D 205 lin. 16



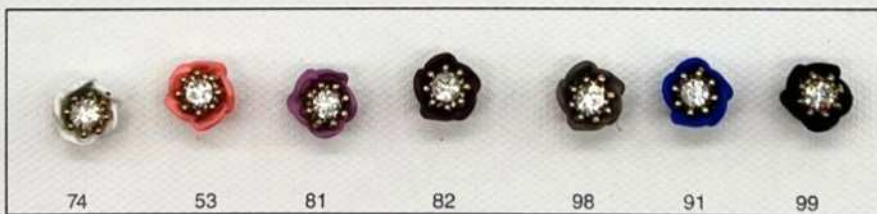
A 258



A 259



A 257



A 260



9087



H 137 lin. 22



B 101 lin. 18



A 184 lin. 16 - 20



A 187



A 188



A 189



A 190



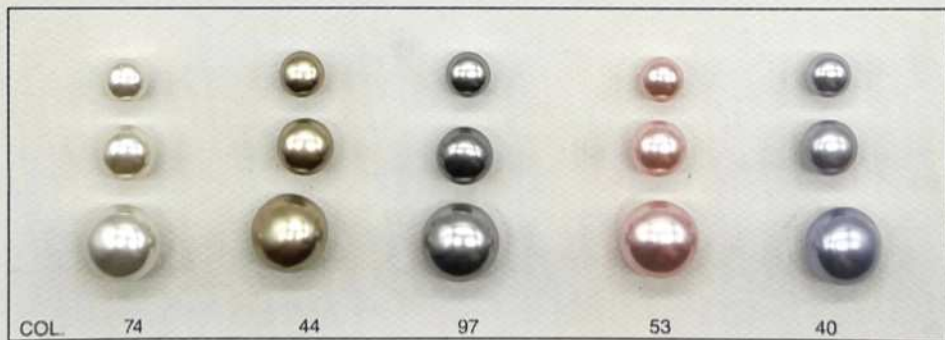
A 191



A 185



A 186



D 139 lin. 14 - 16 - 22

				
19/74	10/106	19/79	10/81	10/42
919S lin. 16				

		
10/74	10/81	10/42
9200 lin. 20		

		
		
10/74	10/81	10/42
919S lin. 12 - 18		

		
10/99	10/74	10/101
5042 mis. 1 - 2		

			
74	81	42	99
9201 lin. 14			

					
19/74	G010/74	G075/87	G069	G081/81	G099/74
9202 lin. 16					

			
75	53	83	47
9181 lin. 16			

			
97	87	79	177
9181 lin. 18			



B110

B111

B112

B113



B114

B115

B116

B117



B118



B119



B120



B125



B122



B123



B126



B127



B121



B124



col. 19/310

311

312

313

314

5005 mm 9



col. 19/310

311

312

313

314

9102 lin. 16



col. 74

80

40

93

A334 lin. 16



col. 74

106

53

40

A335 lin. 18



col. 74

63

72

57

99

A333 lin. 18



3162 lin. 16-20-24



3771 mm 8-10-12-14

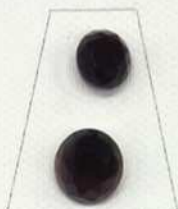
COL 19/109



5282
lin.14-16-20



5287
lin.14-24



5286
lin.16-20



5285
lin.14-20



5283



EFFETTO SPECCHIATO (riferimento cartella colori Swarovski)

Valido solo per art.5287



col. T74

col. 225

5883
lin.36



col. T74

col. 225

5285
lin.40



7385 20"



5005 mm. 7 - 9



9078



027 mis. 1



7382 lin. 16



7384 lin. 18



7383 lin. 18



7381 lin. 18



9206 lin. 16 - 20



5043 mis. 2 - 3 - 4



5397 lin. 16



5398 lin. 18



7306 lin. 16



9207 lin. 16

RIFERIMENTO COLORI COLORS CARD



74 106 79 101 86 44 37 91 98 58 99 32 33



74 44 54 95 33

6352 lin. 15 - 18



9040



9039



9038



9041



74



54



53



110



79



86



93



95



98



99



9034
lin. 14-16



9036



9037



9035



200



230



227



228



203



205



229



232



231



224

		
84	98	71
7256		

	
74	71
7257	


9112


9113


9114


9115

col. 71

					
98	99	74	157	192	193
9111					

					
98	99	74	163	95	176
9110 lin. 18 - 22					

						
44	79	81	98	99	74/158	106
9109 mm 9 - 12					9108	

PIETRE DA CUCIRE FATTIBILI ANCHE A BOTTONE
SEWING STONES THAT CAN BE MAKE LIKE A BUTTON



5882 MOD



9011



4929



3582
lin.16



5097



3869



5096



3143
lin.16



5635
lin.14-18



5629
lin.12



5198
lin.18



3020
mm.6-9



5268



5197
lin.14



5006



3162
lin.16-20



3739
mis.1-2



3987
lin.16-20



5385
lin.12-14



5043
mis.2-3



5384
lin.14-16



5217
mis.1



5206
mis.1-2



5383
lin.12-20



5631
lin.14-16



5203
lin.12-14



3330
mis.1-2



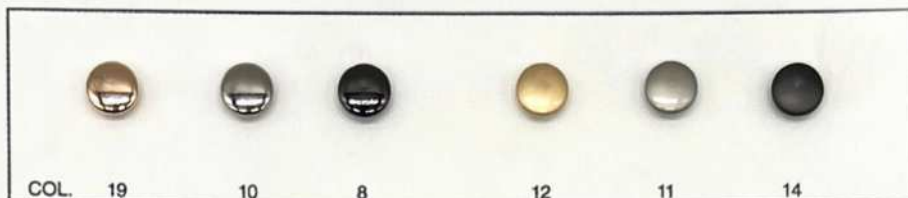
3393
lin.16-20



3906
mm.8-10



5582
lin.16-18



B148 lin. 16



B150 lin. 18



B151 lin. 16



B153 lin. 16



B149 lin. 16



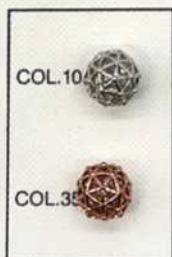
B152 lin. 18



A394 lin. 14



B147 lin. 18



B146 lin. 16



B145 lin. 18



H256 lin. 24



A389



A390



A391



A392



A393



COL.

74

106

79

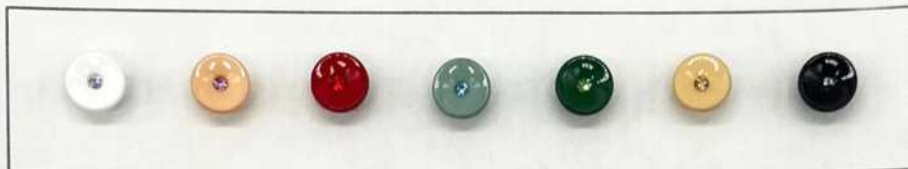
88

93

19

10

D 405 lin. 18



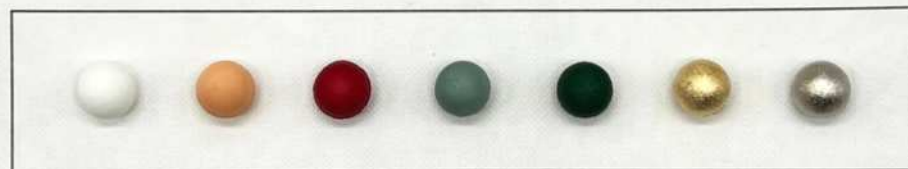
D 406 lin. 18



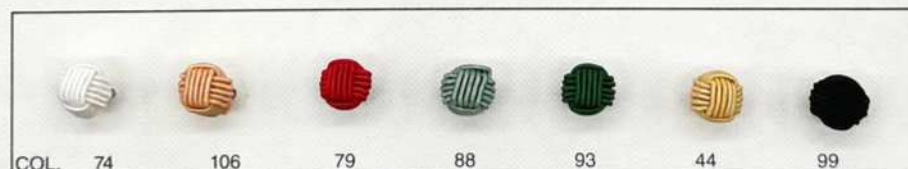
COL. 12

11

D 407 lin. 18



D 408 lin. 16



COL.

74

106

79

88

93

44

99

H 394 lin. 16



COL.

19/74

19/106

10/79

10/88

19/93

19/44

10/99

D 409 lin. 16-18



COL.

3/74

3/53

6/79

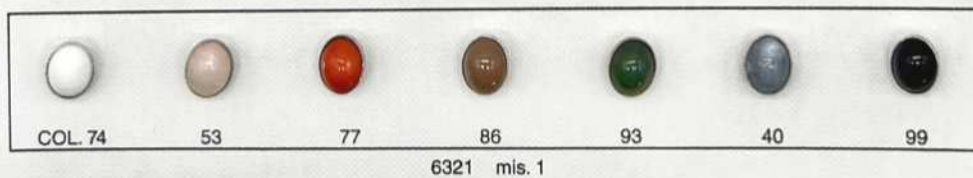
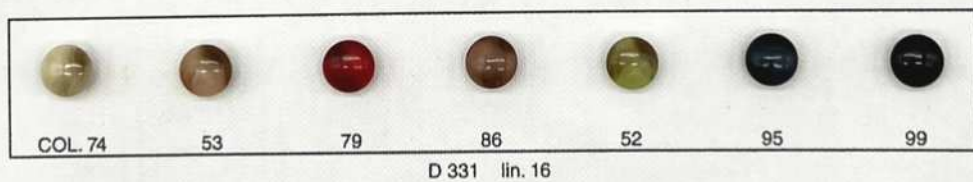
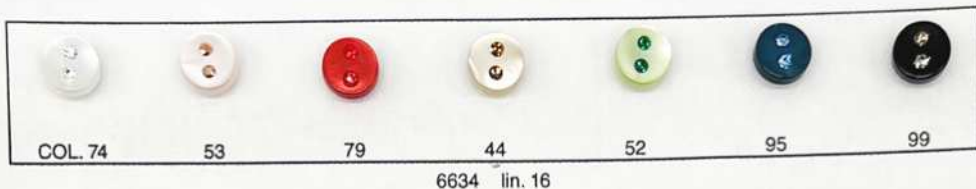
6/88

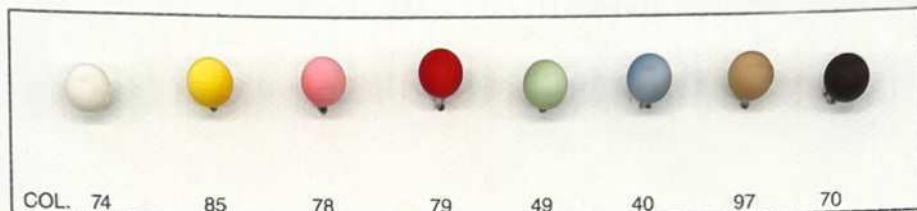
3/93

3/44

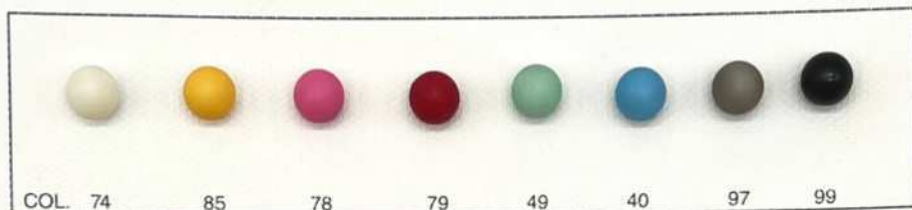
6/99

A 632 lin. 16-18





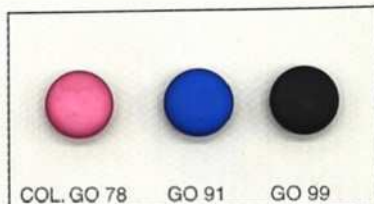
D 141 lin. 12



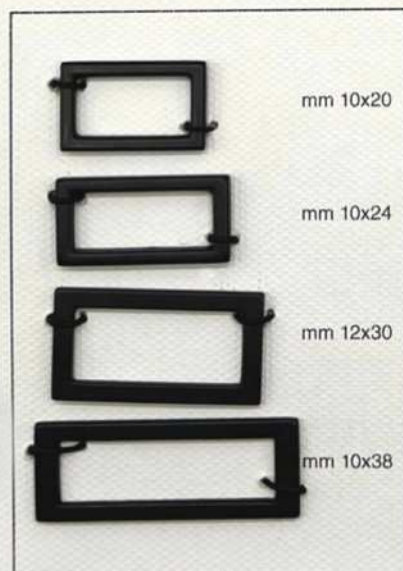
D 140 lin. 14



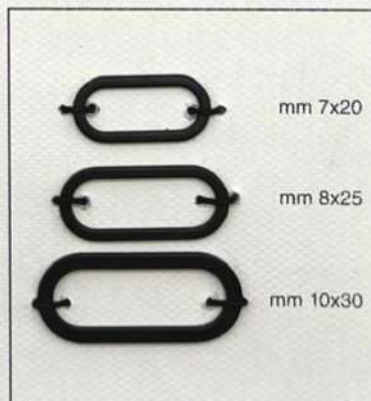
H 136 lin. 22



0252 GO lin. 18



E 145



E 146

COL 54



6166 GO
lin 14-16



8047 GO
lin 10



4965 GO



3582 GO
lin 16



5333 GO
lin 14

COL 69



6811 GO
lin 16-20



4748 GO
lin 16-20



8046 GO
lin 14-16



717 GO
lin 14-18



4964 GO

COL 99



7149
lin 14-15



4786 P



8030 P



370 P
lin 16



8048 P

COL 40



6208 P
lin 20



0251 P
lin 18



436 P
lin 16



6271 P



6058 P
lin 18

COL 10



6166 GL
lin 14-16



0121 GL
lin 18



4786 GL



4791 GL
lin 18



4783 GL
lin 18

COL 8



6811 GL
lin 16-20



4748 GL
lin 16-20



8046 GL
lin 14-16





717 GL
lin 14-18



4964 GL

BOTTONI CERAMICA

	
54	58
9196 lin. 20	

CERAMIC BUTTONS

	
54	58
9197 lin. 18	

COLORI BOTTONI CERAMICA COLORS CARD CERAMIC BUTTONS

						
74	54	76	86	87	70	58
						
81	43	98	91	134	123	46

9197 MOD lin 18

			
74	74 OP	44	44 OP
7298 lin. 18			

	
19/74	G099/74
9103 PE lin. 12 - 16	

				
74	42	81	106	95
7299 lin. 18				

		
19/95	8/74	8/98
8079 lin. 16 - 18		



6324
lin.14-20



6166
lin.14-16



6352
lin.15-18



6203
mm.8-10



027
mis.1-2



3032
lin.18



6810
lin.14-18



6811
lin.16-20



6812
lin.14-16



6487
mm.8



6807



6758



6808
lin.16



6690
lin.16



6686



0121
lin.18



6293
lin.24



6982
lin.18



6991
lin.20



6953



6592
lin.18



6593



0164
lin.18



6804
lin.18



0251
lin.18



6186
lin.20



6331
lin.12



6321
mis.1



6212
lin.18



6979
lin.20



3392 V
lin.14-16



3393 V
lin.14



5333 V
lin.14



5398
lin.18



5397
lin.16



847
lin.20



803
lin.18



840
lin.20



848
lin.20



849
lin.24



910
lin.18



666
lin.20



6634



881



882



717
lin.14-20



841
lin.20



800
lin.18



839
lin.20



958
lin.18



883
lin.16-24



6687
lin.14-18



823
lin.14-16



824
lin.18



3024
lin.12-16



4948
lin.16



4988
lin.18



301
lin.20-24



4680
mis.1-2



4602
mis.1



4819
lin.14



4697
mis.1



4696
mis.1



5816
lin.16



4757
lin.18



4890



4934



4930



4676
lin.16



370
lin.16



4738
lin.14



4910
lin.16



4892
lin.20



4746
lin.20



4783
lin.18



4748
lin.16



4964



4966



4805
lin.16



4784
lin.24



4962



4745
lin.16



316 MOD

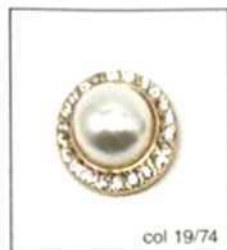


4786



4965

CLOTHING BUTTONS
BOTTONI CAPOSPALLA



col 19/74

A 818 lin 36



col 10/86

D 443 lin 44



col 10/86

D 444 lin 44



col 10/44

A 747 lin 50



col 6

B 200 lin 36



col 10/74

D 425 lin 44



col 74

B 198



col 10

B 199 lin 58



A 624 lin 44



col 10/74

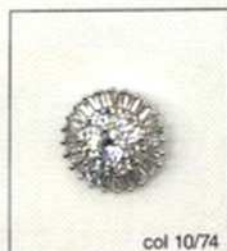
D 480 lin 40



A 628



A 576 lin 54



col 10/74

A 768 lin 30



col 10/74

A 644 lin 36



A 614 lin 42



A 615 lin 44



col 98

A 691 lin 42



A 600 lin 50



A 581 lin 54

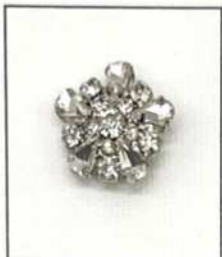


A 591 lin 58

DISPONIBILI ANCHE COME GEMELLI
 THEY ARE AVAILABLE ALSO LIKE CUFFLINKS



9160 col. 19/74



9132 lin. 34 col. 10/74



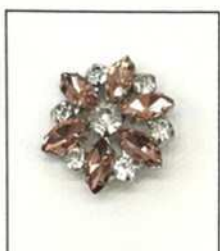
9154 col. 10/74



3137 GEMELLO



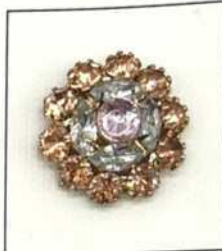
9141 col. 10/152



3846 col. 10/106



A336 col. 19/106



A103 col. 19/106



9276 col. 10/93



3657 lin. 48 col. 10/93



5288 lin. 46 col. 10/93



A244 col. 10/93



5672 lin. 36 col. 10/40



A337 col. 10/95



A202 lin. 44 col. 8/95



A196 col. 8/95



9263 col. 10/99



9274 lin. 40 col. 163



9290 lin. 44 col. 99



A225 MOD lin. 42



A 566 lin. 28



A 419



A 420



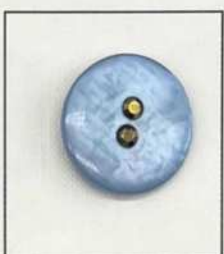
A 421



A 549 lin. 36



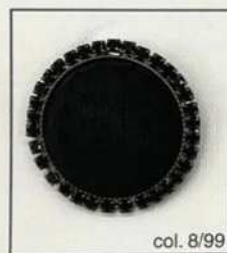
A 557 lin. 44



A 507 lin. 40



A 506 lin. 44



col. 8/99

H 157 lin. 50



col. 10

A 287 lin. 40



col. 13/87-99

A 207 lin. 36



col. 99

A 209



D 224



col. 95

A 384



D 226 lin. 44



col. 99

D 156



col. 40

D 145 lin. 44



H 198



col. 58

A 338



col. 99

1036 lin. 44



col. 74

D 108 lin. 40



col. 74OP/99

7131 lin. 40



D 234 lin. 36



col. 74

D 110 lin. 44



col. 44

8081



8061 lin. 32



col. 19/40

5994 lin. 40



col. 19/95

9003 lin. 44



col. 19/74

B 167 lin. 36



col. 19

4717 lin. 44



col. 19

4420 lin. 40



col. 19/95

B 157



col. 19

4690 lin. 40



col. 19

4453 lin. 44



col. 19

4901 lin. 44



col. 19

8056 lin. 44



col. 3

A 221 lin. 40



B 166



A 289 lin. 40



B 169 lin. 40



col. 53

D 212 lin. 44



col. 83/163

7148 lin. 44



col. 54 OP

D 292 lin. 44



D 164 lin. 36



col. 19

D 293 lin. 44



col. 19

D 313 lin. 38



D 367 lin. 40



col. 3

D 312 lin. 44



A 267



A 266



A 268



A 269



A 264



A 263



col. 53

D 264



col. 106

8082 lin. 46



col. 53

A 379



B 160 lin. 36



col. 74

7256 lin. 34



col. 74

D 201 lin. 40



col. 75

D 313 lin. 38



D 335 lin. 40



A 452



A 418 lin. 42



D 334 lin. 40



B 172 lin. 40



col. 19/74

7330 lin. 32



col. 19/74

B 171 lin. 48



col. 74

D 318 lin. 40



col. 74

D 268



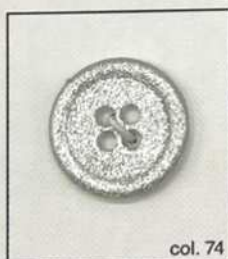
col. 74

D 379 lin. 44



col. 74

D 378 lin. 44



col. 74

6637 lin. 40



col. 10

G 104 lin. 48



col. 74

7130



col. 74

6721 lin. 44



col. 83

D 338 lin. 52



D 345



D 346



D 347



316 lin. 36



B 132 lin. 36



8091 lin. 36



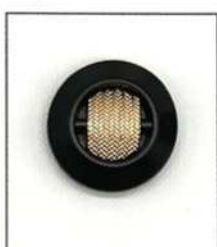
8090 lin. 40



B 131 lin. 40



8076 lin. 40



8077 lin. 40



col. 99

4780 lin. 40



D 190



D 189



col. 19/99

9085 48



B 130 lin. 54



A 605 lin. 40



4728 lin. 44



col. 10/99

B 156



B 133 lin. 48



B 177 lin. 36



A 575 lin. 32



A 574 lin. 42



B 136



col. 10

301 lin. 32



col. 10

325 lin. 36



B 102 lin. 36



B 103 lin. 40



col. 8

336 lin. 36



col. 10

309 lin. 32



B 181 lin. 36



B 180 lin. 36



col. 10/99

7052 lin. 40



4491 lin. 36



col. 10/99

4736 SMA lin. 32



B 109 lin. 36



B 107 lin. 36



D 186 lin. 44



col. 19/99

317 lin. 36



col. 19/99

318 lin. 32



col. 19

8069 lin. 40



B 106 lin. 40



col. 3

4736 lin. 36



B 128 lin. 36



4724 lin. 36



4805 lin. 40



4761 liscio lin. 40



4777 lin. 44



4856 lin. 44



8009 lin. 46



4691 lin. 52



4950 lin. 54



D 154 lin. 44



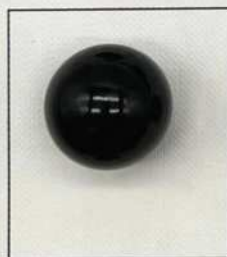
6621 lin. 44



6553 liscio lin. 44



6302 lin. 44



7171 mm. 22



D 329 40



0239 lin. 44



6569 lin. 44



D 275 lin. 44



D 303A lin. 40



D 333 lin. 40



D 286 lin. 40



col. 74

D 300 lin. 44



col. 74

D 299 lin. 36



col. 74

D 309 lin. 40



col. 87

6657 lin. 40



6843 lin. 34



6844 lin. 34



D 196 lin. 36



D 199 lin. 40



D 195 lin. 44



D 191 lin. 48



col. 86

D 291 lin. 44



D 398 lin. 40



col. 86

D 319 lin. 44



col. 86

6658 lin. 44



col. 44

D 377 lin. 44



col. 19/69

H 260 lin. 42



H 362



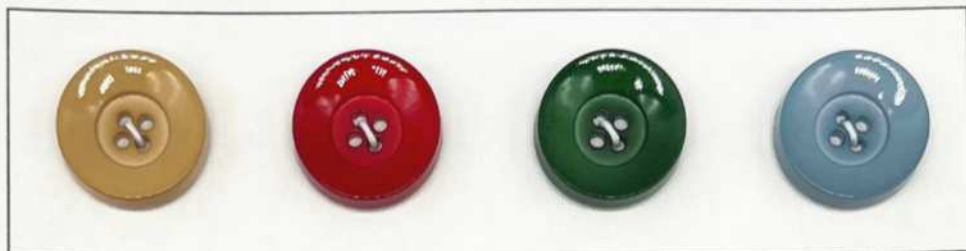
D 402 lin. 42



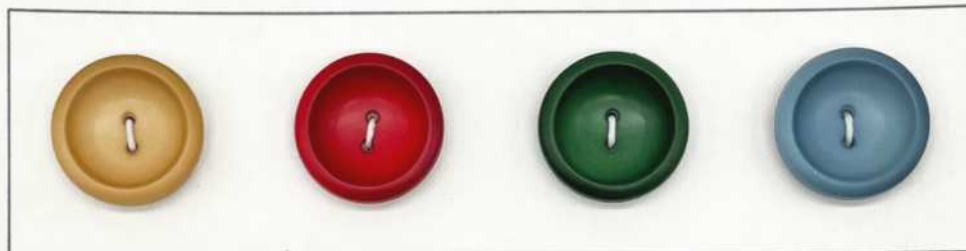
D 401 lin. 36



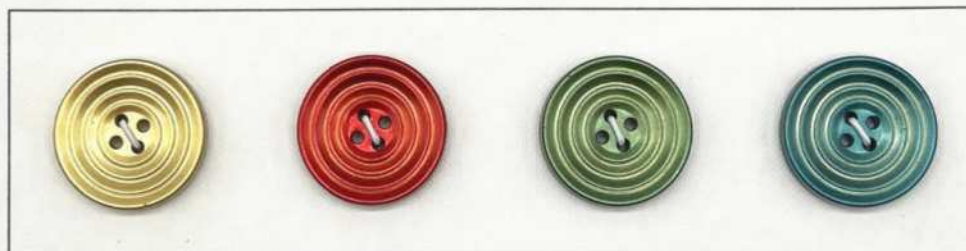
H 337 lin. 40



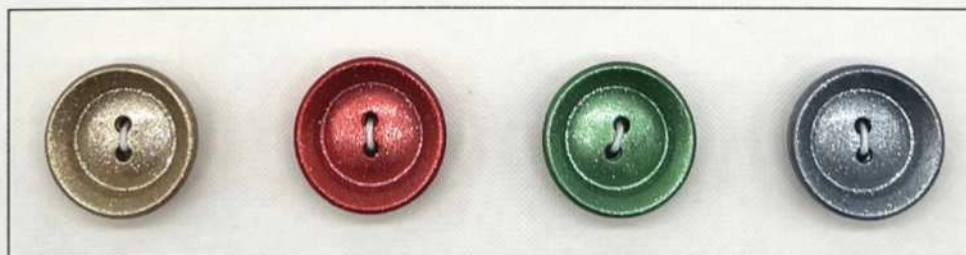
D 411 lin. 44



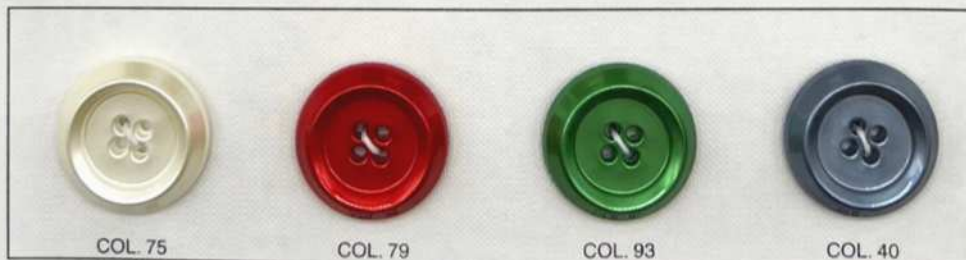
D 412 lin. 44



D 413 lin. 44



D 414 lin. 44



COL. 75

COL. 79

COL. 93

COL. 40

D 415 lin. 44



MOSCHETTONI, PIERCING,
CLIP E CENTROSENO



0718 mis 1-2-3



0511 mis 0-1-2-3-4



E 398 mis 1-2



E 399 mis 1-2-3



2047 mis 1-2



E 401



0977



E 400



E 403



E 404 mis 1-2



0978



E 402



U 300



249 U



2845



U 302



248 U



214 U



193 U



2846



2847



E 173



E 396



E 394



E 395



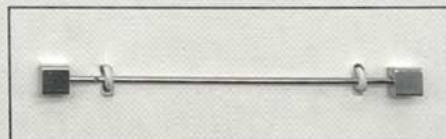
2854



U 295



E 397



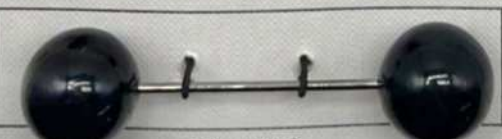
U 355



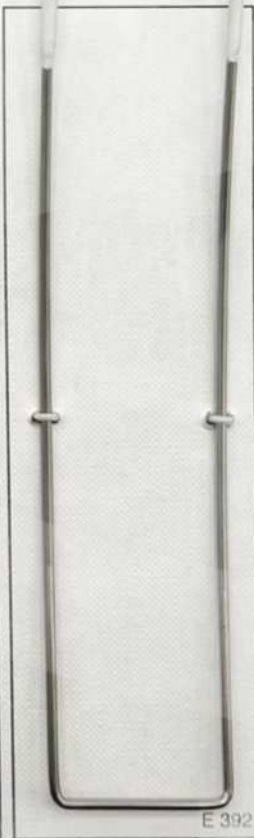
194 U mis 1



U 296



194 U mis 2




REALIZZABILI IN ALTRE FORME E MISURE A RICHIESTA / THESE CAN BE MADE IN OTHER SHAPES AND SIZE ON REQUEST

SNAP BUTTONS & EYELETS
BOTTONI AUTOMATICI &
OCCHIELLI

COL 106

			
EFFETTO PIENO	EFFETTO GOMMATO	EFFETTO GLITTER	
			
69	81	82	19

		
2823 mm 40	2819 mm 12	2820 mm 10

			
2821 mm 14	2822 mm 18x25	2290 mm 20	2291 mm 20



8070
lin. 28 - 36 - 44

COL. 95



8070
lin. 70

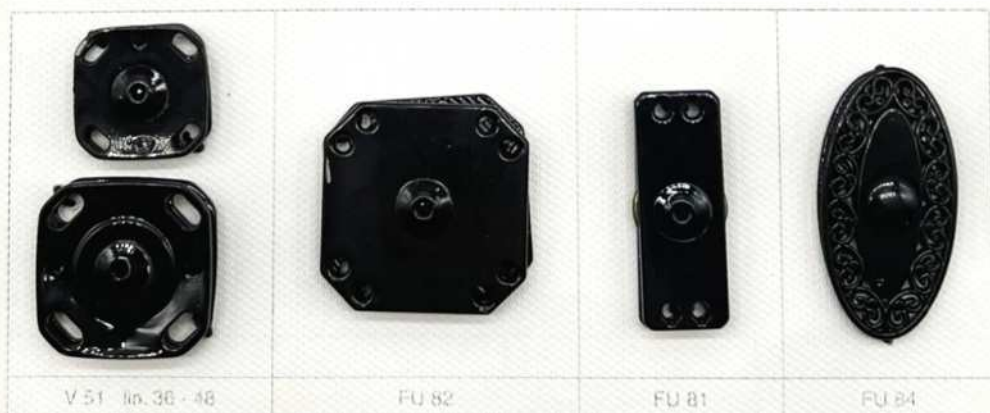
COL. 95



8071
lin. 32 - 44

COL. 95







8050
lin. 40

COL. 75
lucido



8051
lin. 28 - 36

COL. 87
opaco

COL. 87
lucido



V. 50
lin. 36 - 46



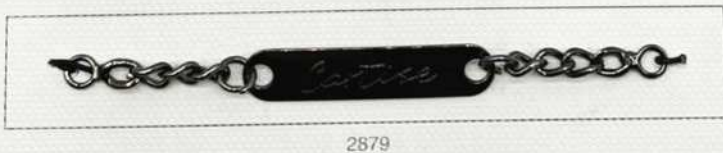
FU 65
lin. 44 - 54 - 80

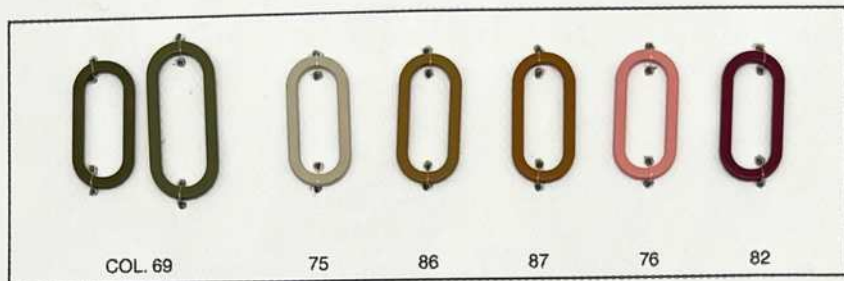


8028
lin. 32 - 36 - 44



FU 83
lin. 44 - 54





COL. 69

75

86

87

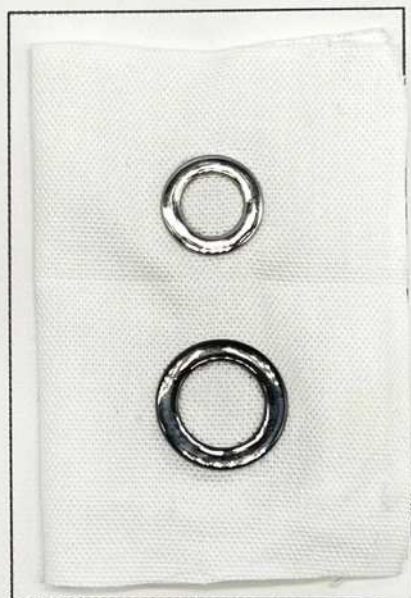
76

82

E146 mm 7x20 - 8x25



B142 lin. 28 - 40



B143 lin. 32 - 40



COL. 75

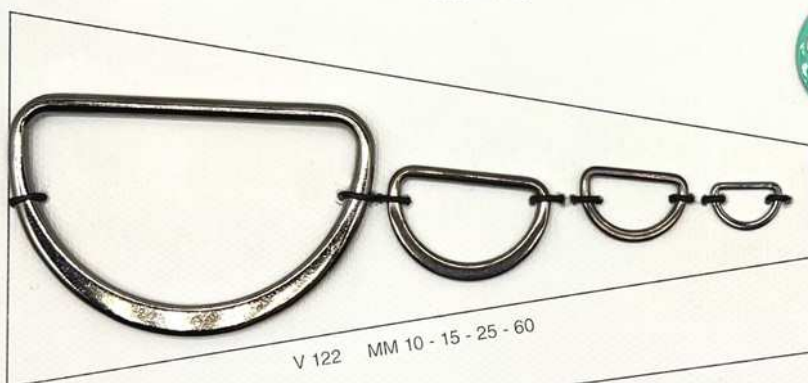
COL. 87

COL. 98

B144 lin. 28 - 36

				
10/92	10/49	8/57	10/71	8/91
				
8/54	10/44	10/97	8/95	8/99

8080 lin. 40





2352 F



0962 ES PERS.



2345 V mis 2



2515 E



2519 D



2345 H



2345 U



2345 E



2345 V mis 1



2515 F



2330 A



2519 C



2345 I



2435



2352 E/MOD



2345 C



2345 P



2345 Y



2345 O



2330 B



2345 Q



2345 S



2345 R



2345 T



8015 C

2345 M



2345 N

2515 L



2515 M

2515 A



2515 I

2515 N



2345 D

2345 F



2345 B

2174 MIG 1



2345 G

6724



2515 O

2444/MOD





2219 C



2219 F



2219 D



2044 A



2218



2443



2323



3752 mm 30



3203 mm 20



3349 mm 20



5103 mm 30



5371 mm 20



A323 mm 20



3204 mm 25



3202 mm 25



3754 mm 10



A324 mm 20



A325 mm 30



A322 mm 25



E 197 mm 40-50



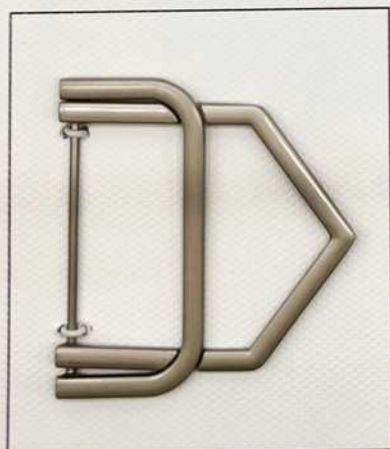
E 198 mm 50



E 200 mm 30-45



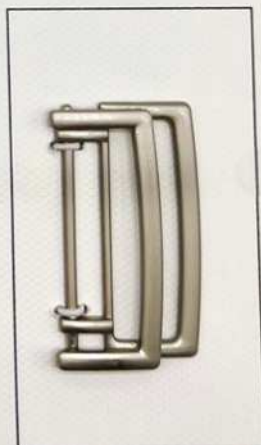
E 199 mm 30



E 196 mm 40



E 201 mm 40



E 202 mm 30



MM10



MM 20



MM30

2200



MM10



MM15



MM20

2040



MM10



MM 20

2210



MM 15



V92 MM 25



2407 MM 25



0634



V80 MM 40-60-80



0762 MIS 2-4



V75 MM 10-20-30-40



E 188



E 190



E 189



E 191



E 193



E 194



0979

AC 26/0

AC 26

AC 27

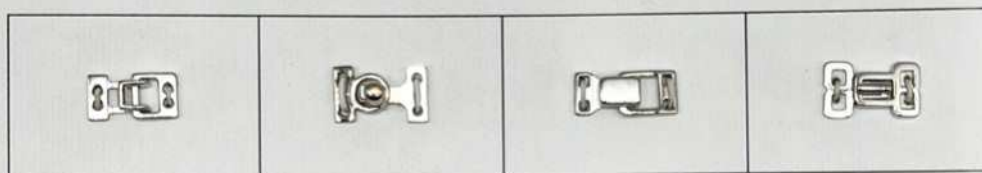


3594

3436

3436 PE

3737

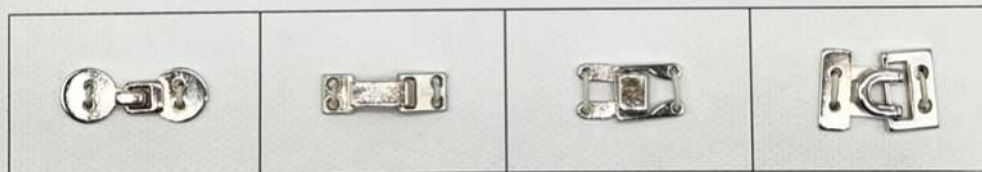


2858

2337

0981

0982

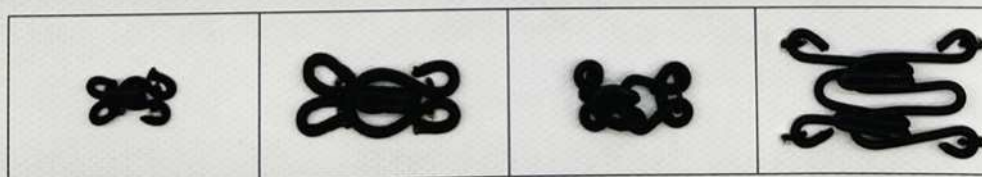


2338

0888

2859

0980



1332 MIS 1

1332 MIS 2

1934

1935



3596

2013

2016



A 509



A 510



A 511



A 512



A 513



5108



5107



5204 G mis. 1



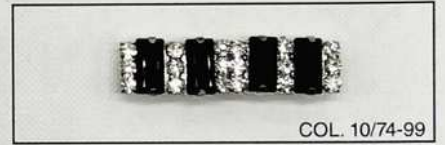
5207 mis. 1



3402 mis. 1



3567



COL. 10/74-99

A 149



A 514



3452 G



5208



E 139



E 140



E 141





5522



2428



5571



3583



2690



2184



4927



V 65



V 61



V 63



2691



2692



2693



0988



0991



0989



0990



0785



2659



2242



2243



V 62



2696



2695



2694



0554



2681



2682



2394



4721 FER



4722 FER



2415



0787



2302



2683



2240



V66



2414



V 68



V 67



2413



0798



0765



2395



0797



V 69



2685



V 231



V 227



V 229



2684



2687



V 226



V 228



2686



2686



5336



5372



5572



2429



5570



5573



5436



3867 FER mis 1



3867 FER mis 2



5585 FER



5461 FER



5460 FER



3914




5700




2107 mis 3



0654 mis 1



0654 mis 2



0654 mis 3



5935



2668



2484



5314 FER



2610



2688



5358



2403 mis 1



2403 mis 2



2039



2501



2673



2674



2052



V 53 mis 2



V 56



V 57



0983



0984



0985



0986



2675



6895



4708



6110



6111



6245



2403 mis 1



2403 mis 2



2039



2501



2673



2674



2052



V 53 mis 2



V 56



V 57



0983



0984



0985



0986



2575



6895



4708



6110



6111



6245



3779



3670



5530



3387



5532



3742



3811 T



5070 T



3740



3554 MOD



5587 MOD



3524 mis 1



3555 MOD



5504 T



5204 T



5120



3499



3870 T



3913

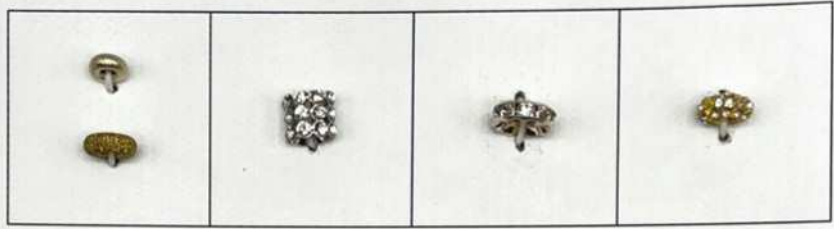


5744 T

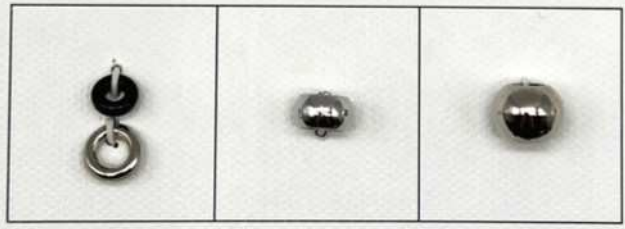
COVERED & METAL PARTS
RICOPERTI & MINUTERIE



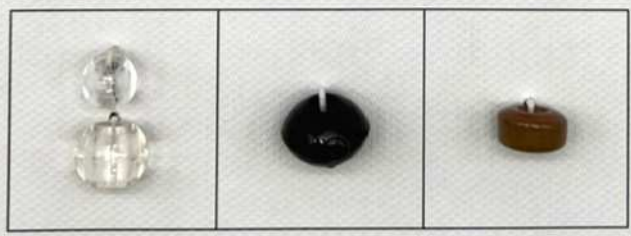
2867 2864 2865 7305



2860 mm 7 - 9 2863 2862 2861



6682 mm 8 - 10 2866 7302 mm 12



7302 mm 9 - 12 7304 7303





2037 CM 10 CM 8



2089 CM 5



2183



CM 3



CM 5

3591



CM 3



CM 6

CM 8



CM 11



3533



2090 cm 6-8



2759-MOD



2580



2444





2832 4722 MIS1 4721PAS 4612 PAS MIS 2



4614 MIS 0-1-2



2899



2829 COL 86



5314 PAS MIS 1-2



2901



2900



2902



2715 MM 8-14-20



2714 MM 6-12-30-45



2762



2898 MM 25



2898 MM 50



2897



2665 MM 35-65-120

COL. 54



H289 44



1514 44



1432 44

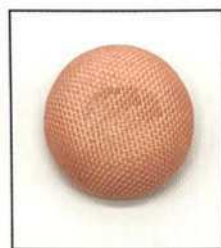


1357 44

COL. 53



1426 44



1431 44



H296 44

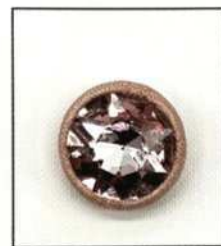


H295 44

COL. 152



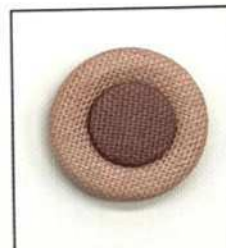
H291 42



H297 36



H292 44



1429 44

COL. 124



1425 44



H294 44



H293 44

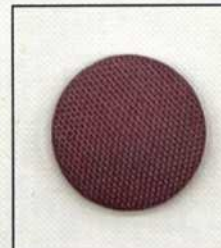


H298 44

COL. 125



H290 44



1433 44



H288 44



1822 50

COL. 54



1427 MM 30



1428 MM 30

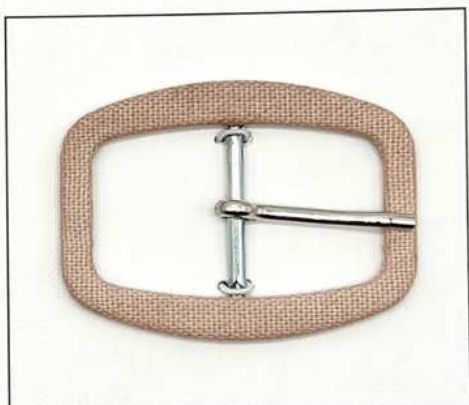


H300 MM 40

COL. 152



1363 MM 30



1598 MM 30

COL. 125



1364 MM 50



H299 MM 40



H301 MM 40

STONES & SEQUINS STONES

PIETRE RICAMO



mm 18 16 14 12 10 8

BN 1122



SS 16
SS 20
SS 30
SS 39

BN 1100



mm 25X18 18X13 14X10 13X7,8 10X6 8X5

BN 4320

BN 4300



mm 19X11.5

BN 4757



mm 25X18 18X13 14X10 12X10 8x6

BN 4120



14,5X11
20X16

BN 4739



mm 25X18 18X13 14X10 10x8 8x6

BN 4627



mm 18X9 15X4 15X7 10X5

BN 4200



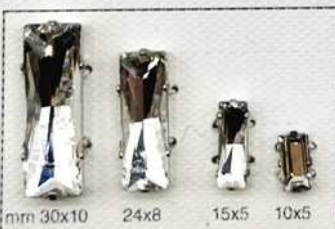
mm 18X18 14X14 12X12 10X10

BN 4470



mm 14x14 12x12 10x10 8x8

BN 4447



mm 30x10 24x8 15x5 10x5

BN 4547



mm 18x18 23x23

BN 4675



mm 14 22 - 27

BN 1201



9081



9082



9047



9048



COLORI DISPONIBILI A MAGAZZINO REALIZZABILI ANCHE SU EFFETTI E1 - E2 - E3 - E4

COLORS AVAILABLE IN STOCK. VERSION E1 - E2 - E3 - E4 AVAILABLE IN ALL COLORS



MIS 1

MIS 2



MIS 3

9084



MIS 3



MIS 2



MIS 1

9083

EFFETTI / VERSION

							
COL. E1/74	E1/98	COL. E2/74	E2/98	COL. E3/74	E3/98	COL. E4/74	E4/98

E1

E2

E3

E4



COLORI DISPONIBILI A MAGAZZINO REALIZZABILI ANCHE SU EFFETTI E1 - E2 - E3 - E4
 COLORS AVAILABLE IN STOCK. VERSION E1 E2 - E3 - E4 AVAILBLE IN ALL COLORS



mm 26x8 18x6

BN 3255



mm 18x13 14x10

BN 3250



mm 26x21 17x13

BN 3265



mm 30x14 20x9

BN 3254



mm 32x17 18x9

BN 3223



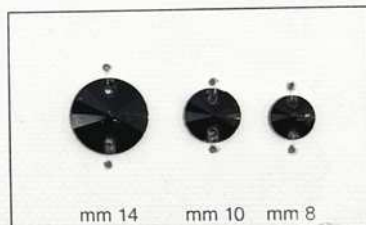
mm 22x13 18x10

BN 3230



mm 24x17 16x11 10x17

BN 3210



mm 14 mm 10 mm 8

BN 1122



74 106 79 101 86 44 37 91 98 58 99 32 33



74 OP 106 OP 79 OP 101 OP 86 OP 44 OP 37 OP 91 OP 98 OP 58 OP 99 OP 32 OP 33 OP



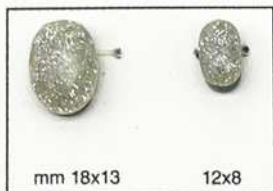
D250



D249



D252



D251



D248



HOTFIX & EMBROIDERY

HOTFIX & PASSAMANERIE

1098



COL. 79

COL. 44

COL. 74

COL. 98

COL. 99

COL. 40

COL. 168

pezze tagliabili a vs misura

pezza cm 115x43

1099



COL. 42

COL. 106

COL. 98

pezza cm 115x40

1100



COL. 10/74

pezza cm 40x22

1101



COL. A

COL. D

COL. F

COL. E

COL. B

COL. C

HOTFIX



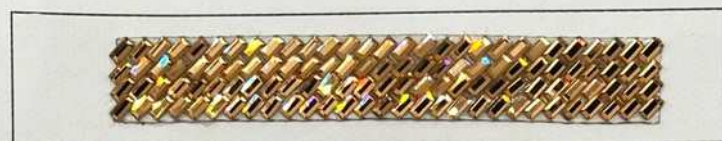
H 178

COL. 106

COL. 58



H 179



H 180



H 182



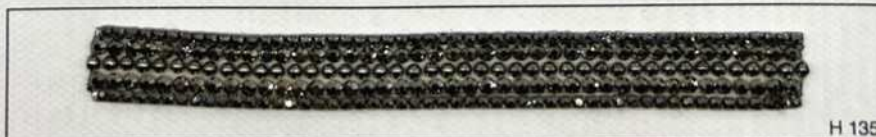
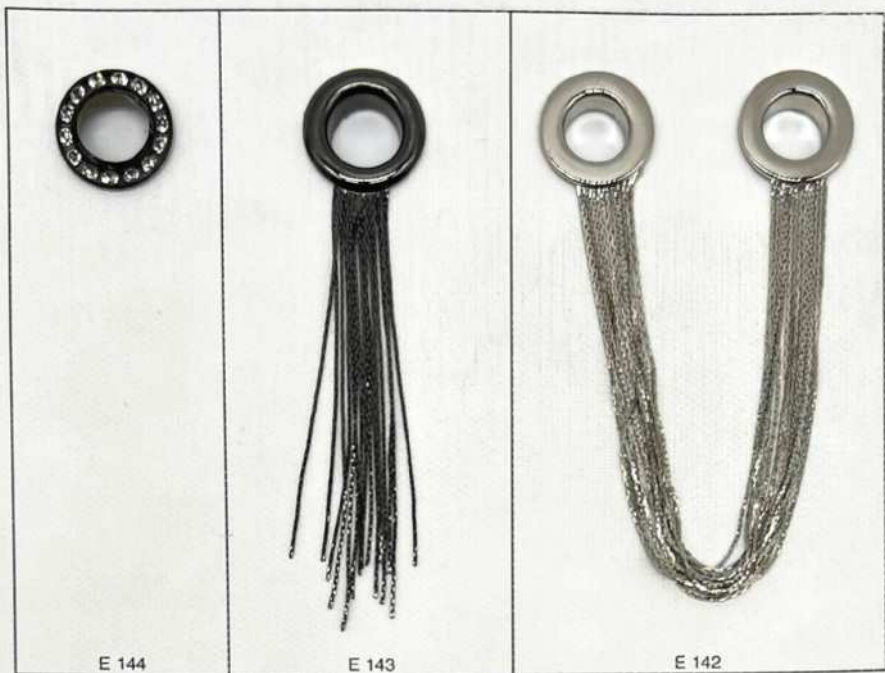
H 181



H 183



H 184



HOTFIX

COL. 71



COL. 65



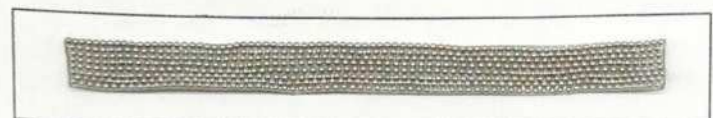
H 347



H 348



H 349



H 350



COL. 106

9117



A 515



A 516



H 342



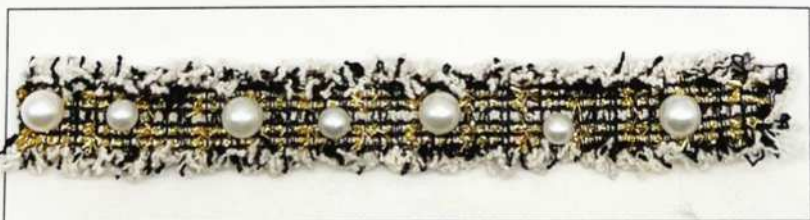
H 341



H 344



H 343



H 346



H 345



H 314



COL. 74

H 310



H 316



H 317



H 318



A 457



A 458



A 459



H 433



H 432



H 434



feathers color



H 305



COL. 74

COL. 99

H 306



H 307



H 308



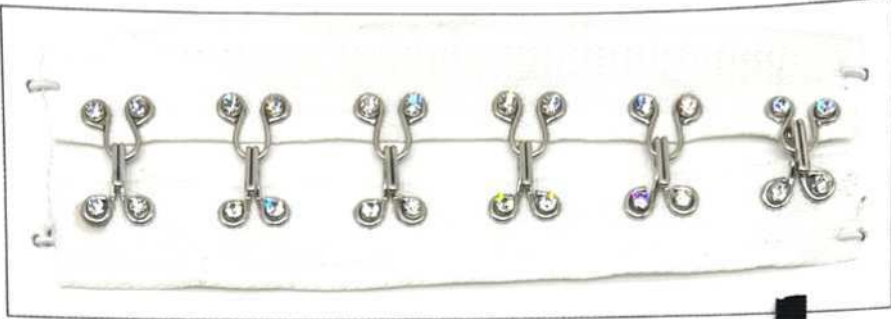
H 302



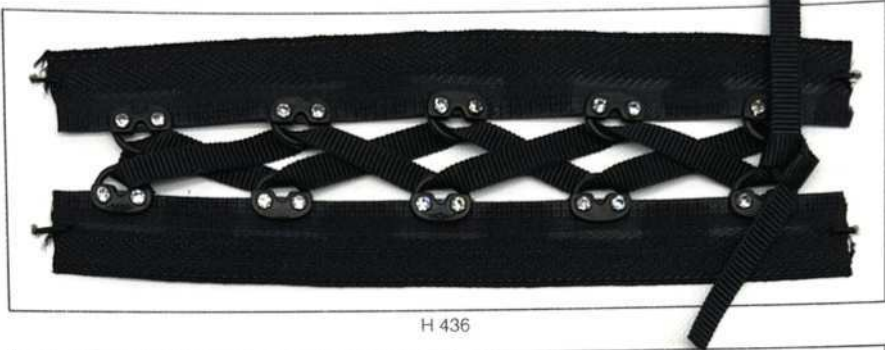
H 303



H 304



H 431



H 436



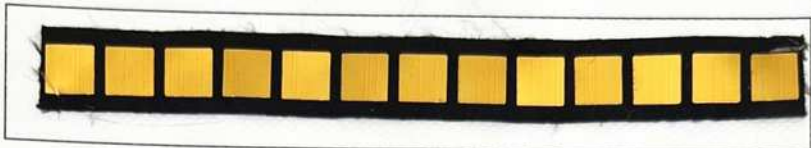
H 430



H 435



H 173



H 174



H 175



H 164



H 167



H 176



H 168



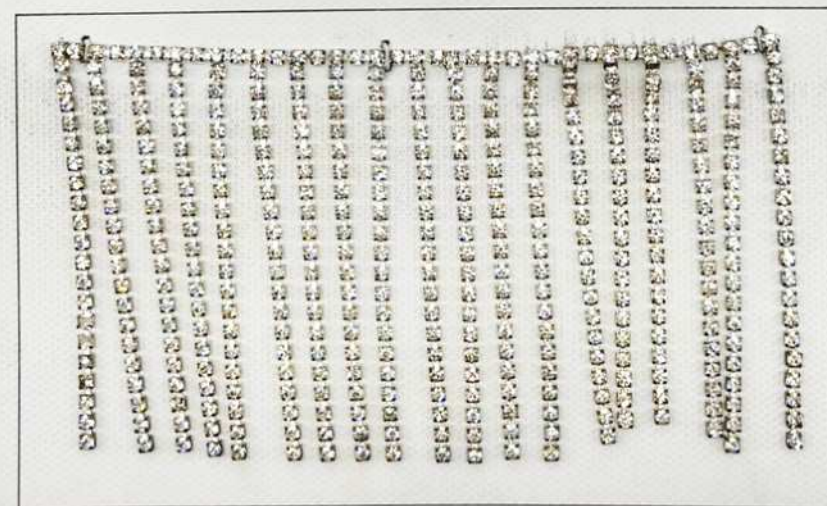
A 247



A 245



A 256



A 246



COL. 74

COL. 76

A 682



COL. 44

H 452



COL. 58

H 453



COL. 74

H 451



A 685



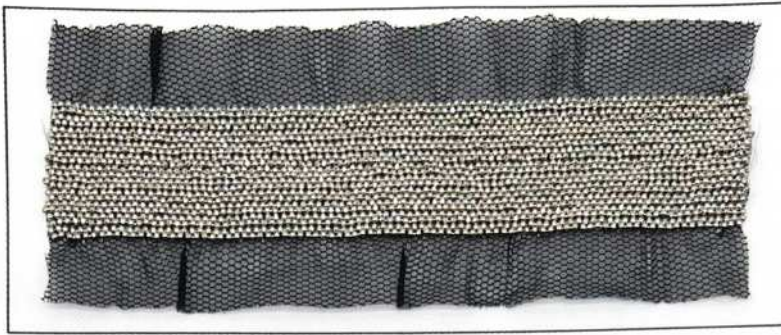
A 684



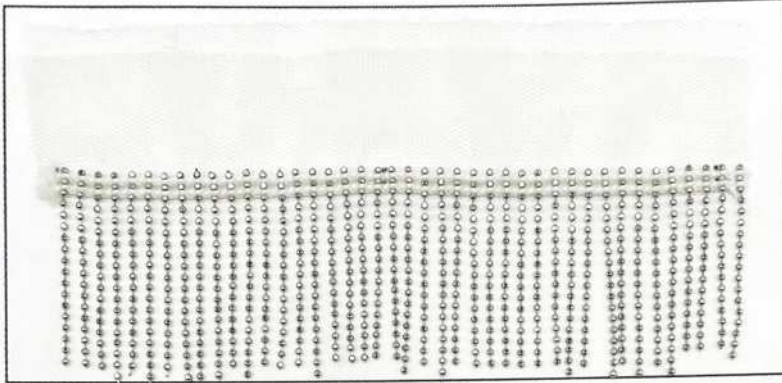
A 683



2804 MIS 3

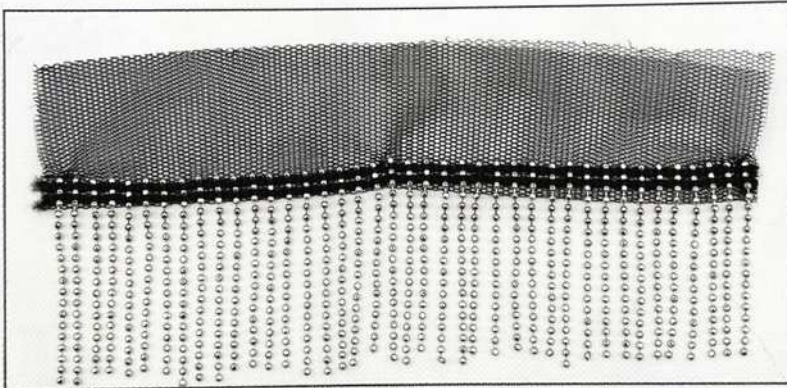


H249



H251

COL. 74



H251

COL. 99



H250



H 172



H 170



H 169



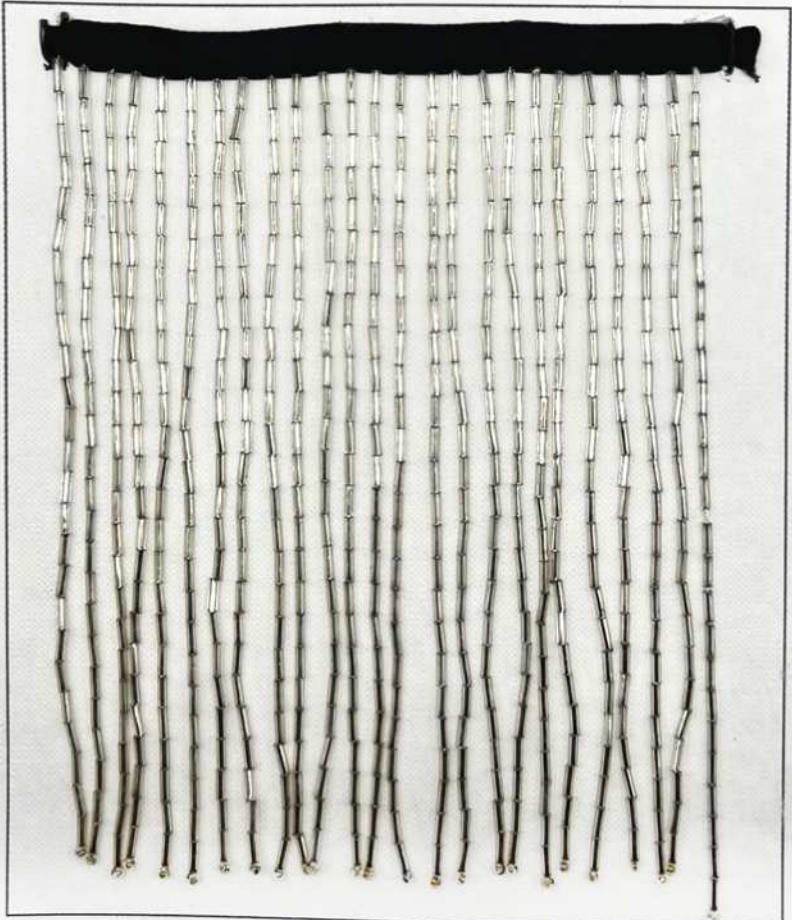
H 171



H 177



H247



H248



H 309

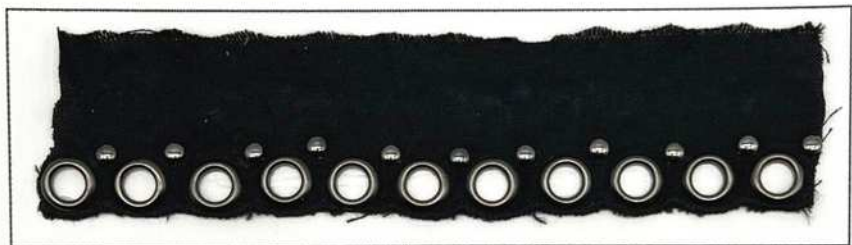
COL. 99



H 310



H 311



H 312



H 313



H 315



9192 CM 8



1054 CM 8



9191 CM 8



1052 CM 8



1051 CM 8



1050 CM 8



1055 CM 8

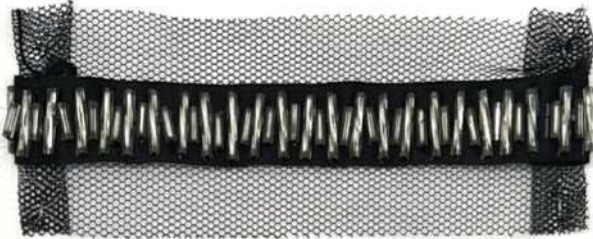


1053 CM 8

1175



1180



1108



1187



1182



1183



1184



1115



1136



1177



1113



1054



1052 COL 58



1182



1183



1184



1115



1186



1177



1113



1054



1052 COL 58



1112



1107



1040



1191



CHAINS
CATENE



3276 PP 14



3276 PP 18



3276 PP 24



3276 PP 32



3276 SS 30



2457 MM 6



2458 MM 5



2458 MM 8



A388

COL 47/76



COL. 99

76

84

47/84

A255



COL. 47/84

A254



A387



A386



A385



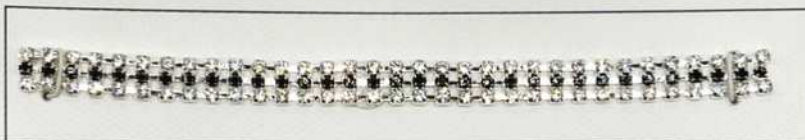
A 255



A 252



A 254



A 253



A 248



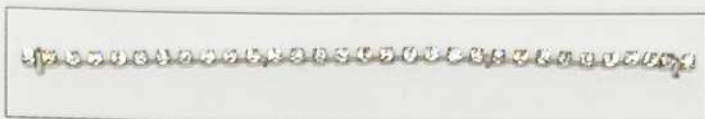
A 251



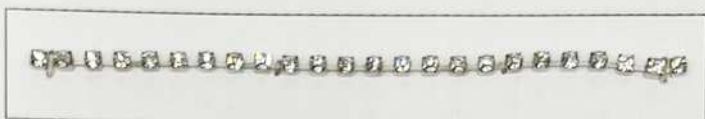
A 250



A 249



3276 LU PP18



3276 LU PP24



3276 LU PP32



1952



9117



1953



1951



9120



9121



E247



E238



E239



E240



E241



E242



E243



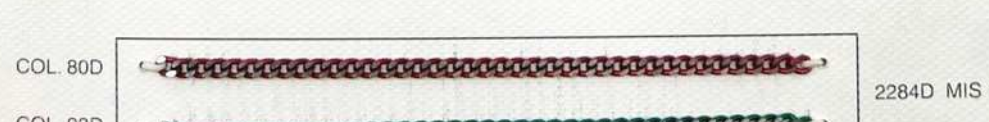
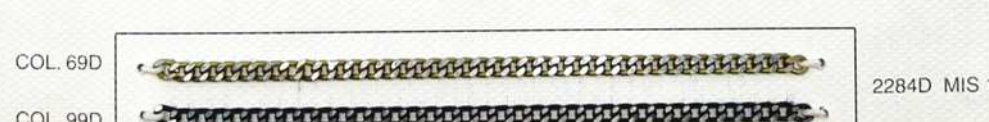
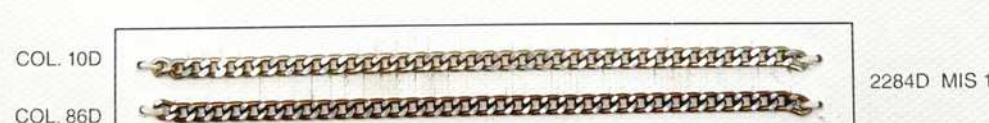
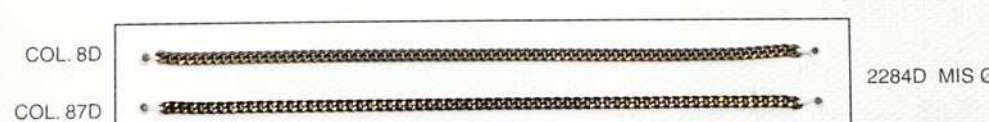
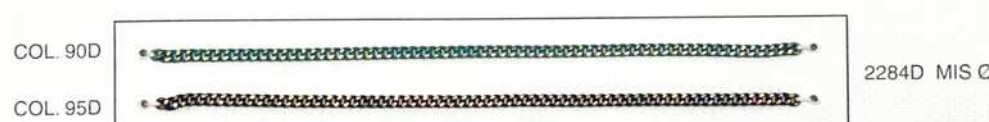
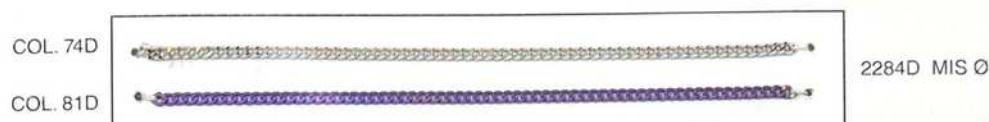
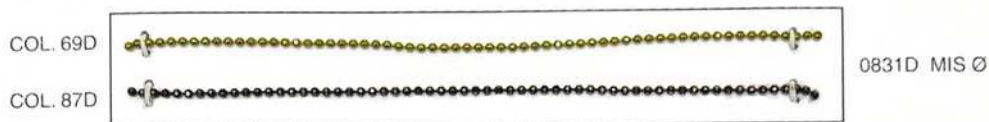
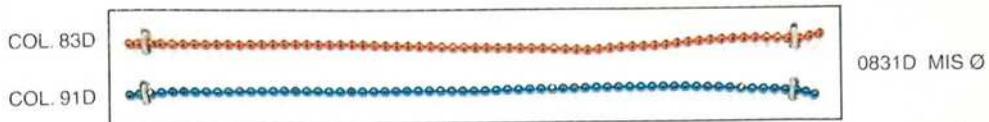
E244



E245



E246





0810



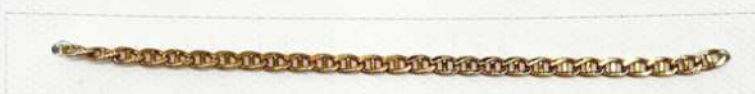
0821 MIS 1



0803



2384



2381



2641 MIS 1



2419



2380



2383



0841



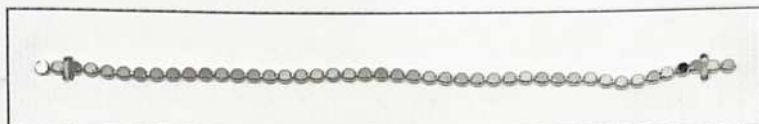
2385



0820



2824



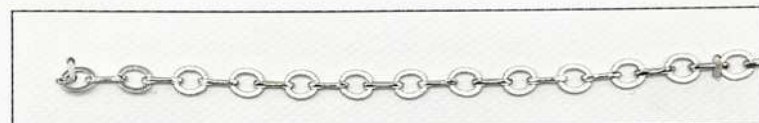
2806 CAT MIS 1



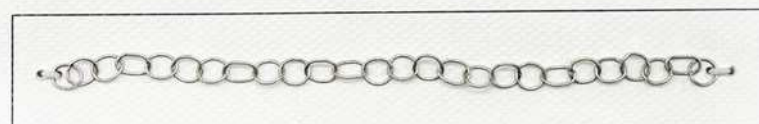
2806 CAT MIS 2



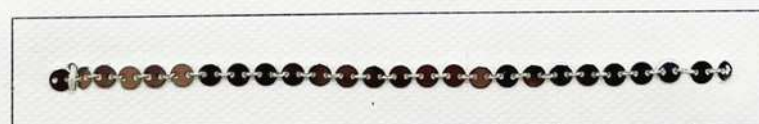
2815 CAT



2826



2791 MIS 1



2825



2813 CAT



2816 CAT



0823 MIS 1



0823 MIS 2



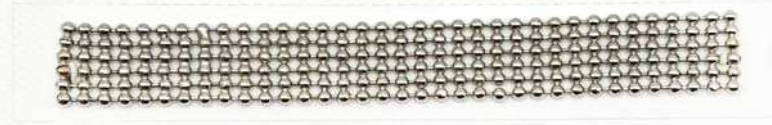
0823 MIS 3



3607 MIS 0
2 FILE



3607 3 FILE



3607 6 FILE



0831 MIS 0



0831 MIS 1



0831 MIS 2



0831 MIS 3



2644



2643



2645



0850



0830 MIS 1



0830 MIS 2



2642



2022 CAT
MIS 1



0823 MIS 1



0823 MIS 2



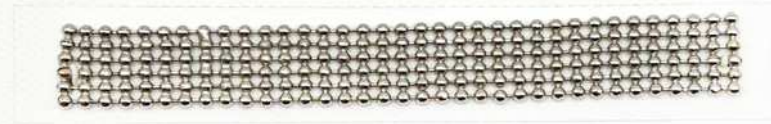
0823 MIS 3



3607 MIS 0
2 FILE



3607 3 FILE



3607 6 FILE



0831 MIS 0



0831 MIS 1



0831 MIS 2



0831 MIS 3



2634



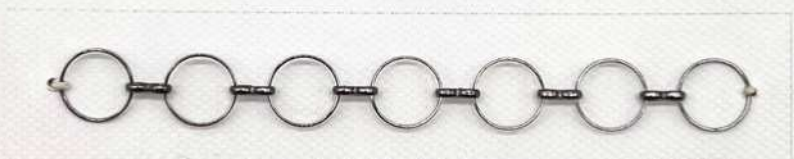
2637



2418



2250



0926



0826



2635



2636



2641 MIS 2



2641 MIS 3



2641 MIS 4



2641 MIS 5



2639



2638



2640



0807 MIS 1



0807 MIS 2



2171



2172



2252



2254



2631



0910



2628



2629



0824 MIS 0



0824 MIS 2



0824 MIS 3



0847



0825



2621 MIS 1



2621 MIS 2



2622



2620



2035 CAT



2481 CAT



2027



2228



2029



2225



2227



2420



2623



2625



2360 CAT



2021 MIS 1



2224



2173



2174



2356 CAT
MIS 2



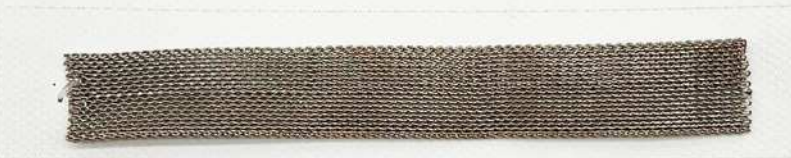
2646



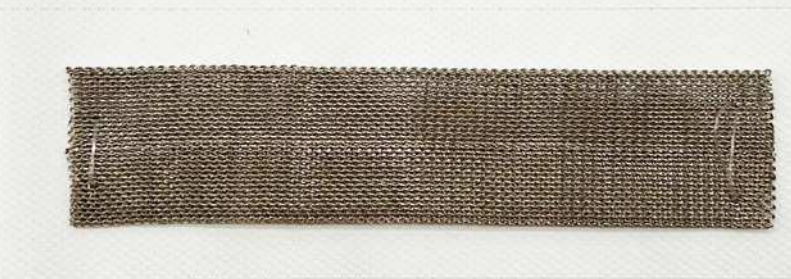
2647



2649 MM 6



2649 MM 15



2649 MM 25



2648



2619



2618 MIS 2



2615



2616



2286



2169



2168



2144



0800 MIS 1



0800 MIS 2



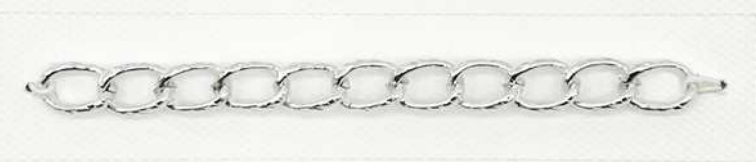
2168 LISCIA



0800 MIS 3



2632



2630



2288



2289



2284 MIS 1



0812 MIS 1



0812 MIS 2



0812 MIS 3



2284 MIS 3



2284 MIS 4



2370 MM 5



2370 MM 7,5



2803 MIS 1



COL. 8

2803 MIS 2



2804 MIS 1



COL. 8

2804 MIS 2



COL. 7



COL. 15

2801



COL. 2



COL. 4



COL. 59

2802



COL. 86

99



D244

6847

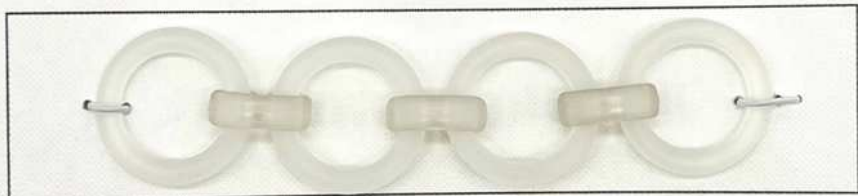


COL. 99 OP



D229

COL. 74OP



D245

COL. 74



6846

6858

D246

6856

6855

7326

D247





2619



2617



2618 MIS 1



0816



2626



2624



2143



2586



2170



2423



2369



2422



2451



2314



2287



2633



E 310



E 311



E 312



E 313



0731



E 278



E 315



E 314



COL. 74

COL. 10/74

D 363



COL. 64



COL. 74



COL. 19



COL. 2 OP



COL. 10



COL. 8

mis. 1



mis. 2



mis. 3



mis. 4



mis. 5



E 316



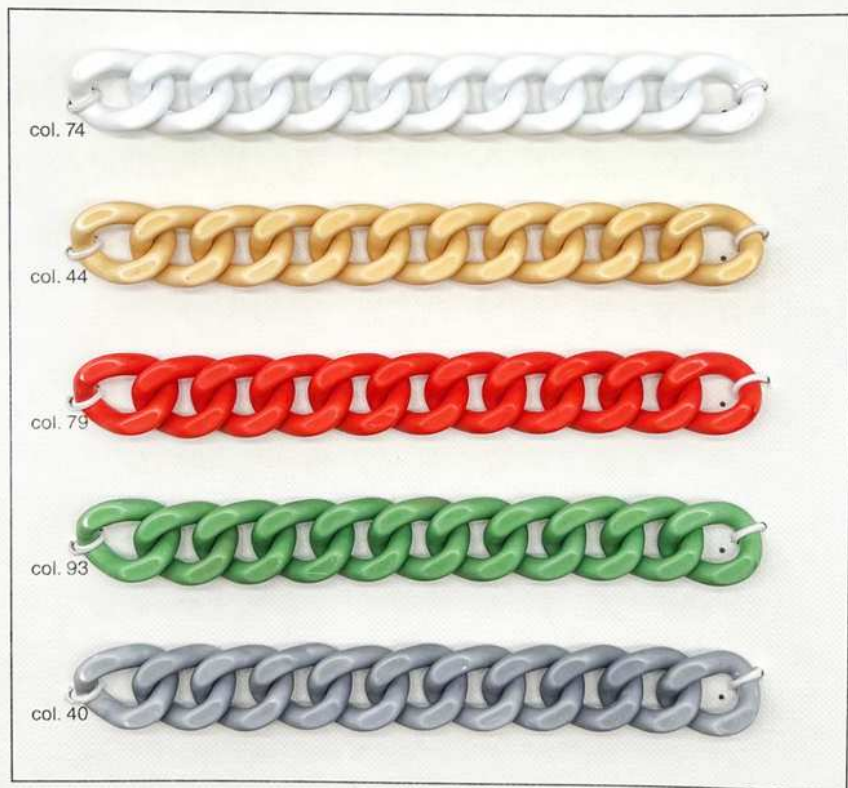
mis. 1

mis. 2

E 318



E 317



col. 74

col. 44

col. 79

col. 93

col. 40

D 362

www.gafforelli.com

GAFFORELLI SRL Via Primo Maggio 7/9, 24060 - Bolgare (BG) Italy
Ph. +39 35 842011
email : info@gafforelli.com